



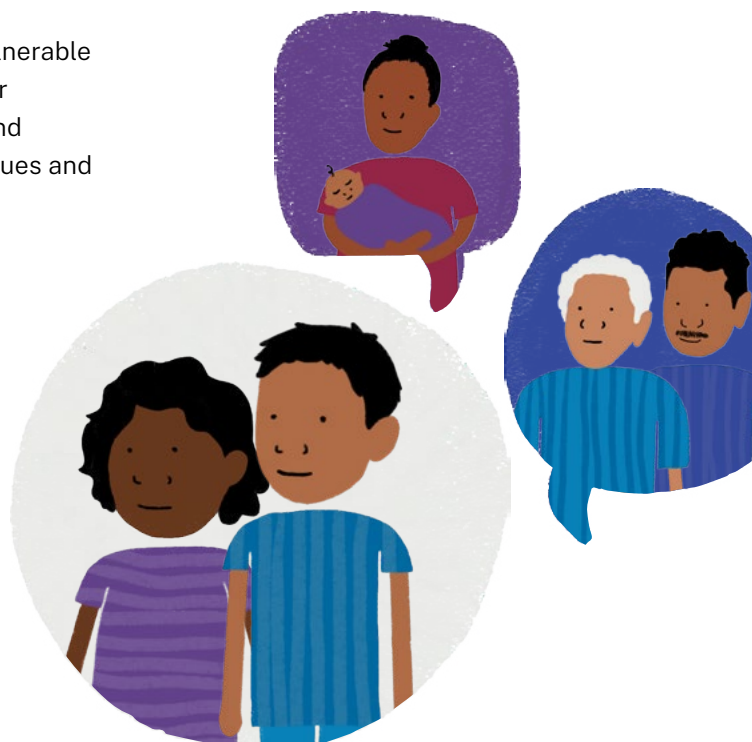
Strengthening our families through an Aboriginal Case Management Policy



The Aboriginal Case Management Policy (ACMP) is designed for caseworkers and practitioners working with Aboriginal children, young people and families. The ACMP was developed through an engagement process involving Aboriginal communities, AbSec, Department of Communities and Justice (DCJ) and other key stakeholders.

The ACMP is designed to achieve safety and wellbeing for vulnerable Aboriginal children and young people by keeping them with or returning them to family and connected to their community and culture, it is holistic, culturally responsive and embeds the values and perspectives of Aboriginal people.

The ACMP and Rules and Practice Guidance will provide case-management that is tailored to the needs of Aboriginal children and families, and commences early in the continuum of support. It aims to empower and support families and communities to reduce the incidence of harm, addressing identified risks and thereby supporting Aboriginal children and young people to thrive.



Principles of the ACMP

Quality Aboriginal Case Management is practice that:

- is child focused to promote child safety and well-being
- facilitates Aboriginal family-led decision making
- values community involvement, including self-determination and advocacy
- is culturally embedded
- delivers holistic services tailored to the needs of Aboriginal children and families
- is oriented to prevent harm and preserve families
- is accountable to Aboriginal communities for the outcomes achieved for Aboriginal children and their families

Elements of the ACMP

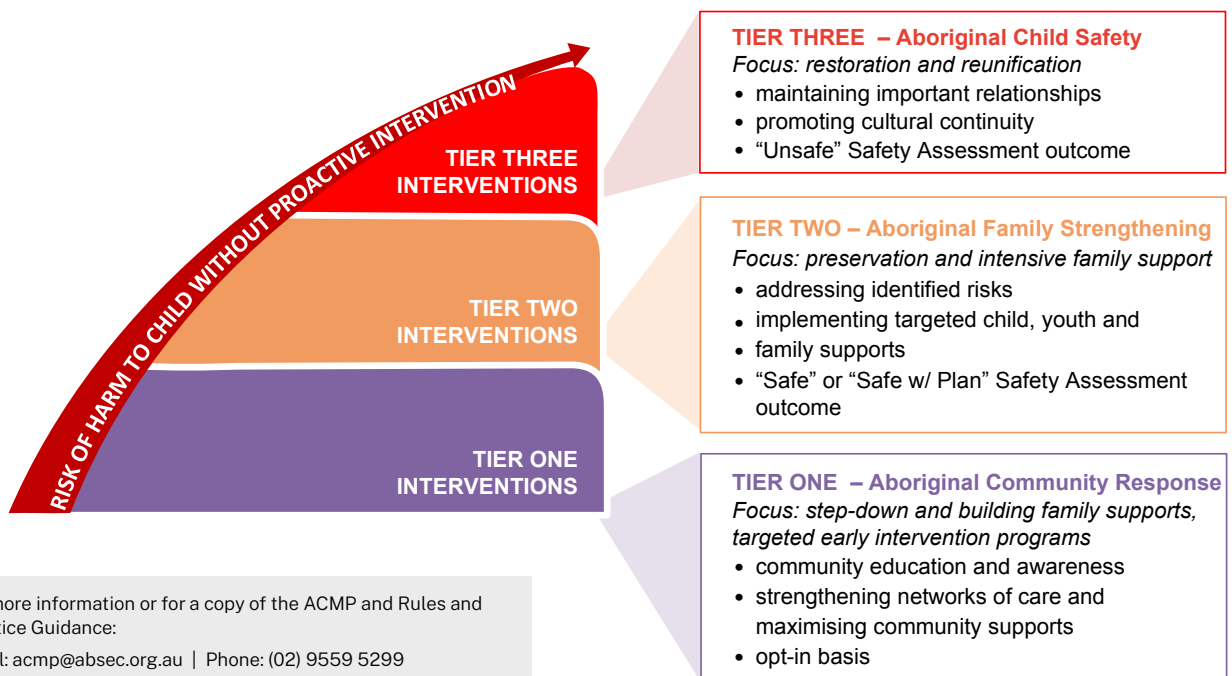
The ACMP contains four core Elements:

Aboriginal Family-led Decision Making (AFLDM)	Pro-active Efforts Standard	Aboriginal Family-led Assessments (AFLA)	Aboriginal Community Controlled Mechanisms (ACCM)
<p>A series of processes that are engaged early in the continuum of support, ensuring participation of families and communities in decisions and actions affecting them.</p> <p>The core elements of Aboriginal Family-led decision making include an Aboriginal Community facilitator, family as key decision making partners, family made 'family plans' and follow up efforts.</p>	<p>The element means that practitioners take meaningful and all possible steps to actively support families to address risks that are threatening the separation of a child from their family.</p> <p>Practitioners demonstrate and document when the pro-active standard.</p>	<p>Practitioners prioritise culturally valid assessment tools to identify and clarify the concerns related to the risk assessment.</p> <p>They will work through a cultural lens and are supported by Aboriginal practitioners where possible.</p>	<p>These unique approaches consist of a formal structure or process established by a local Aboriginal community through their own processes to represent the interests of the community.</p> <p>They oversee decision-making processes affecting Aboriginal children, their families and communities.</p>

Aboriginal Continuum of Support

The ACMP introduces the Aboriginal Continuum of Support, aimed at achieving safety of an Aboriginal child before removal is required. It uses a series of early, holistic and tailored interventions in order to ensure that the needs of children are met as quickly and effectively as possible in a culturally safe way.

The continuum is broken into three levels of intervention based on timing, and intensity. It targets the intervention to correspond to the level of risk, safety and level of care required for each child. Each program will provide culturally-appropriate and locally –relevant services that cater to the needs of the child, their family and their community.



For more information or for a copy of the ACMP and Rules and Practice Guidance:
 Email: acmp@absec.org.au | Phone: (02) 9559 5299

FURTHER READING

- Key themes that emerged during the workshops, including your views and key messages, can be found in our **workshop report**.
- We have prepared an overview of the key themes arising from our stakeholder consultations – please read **What You Told Us – Aboriginal Case Management Policy Consultations**.
- A further summary of the key themes emerging from our survey is available **here**.
- **View the Aboriginal Case Management Policy and Rules and Practice Guidance** on the DCJ website