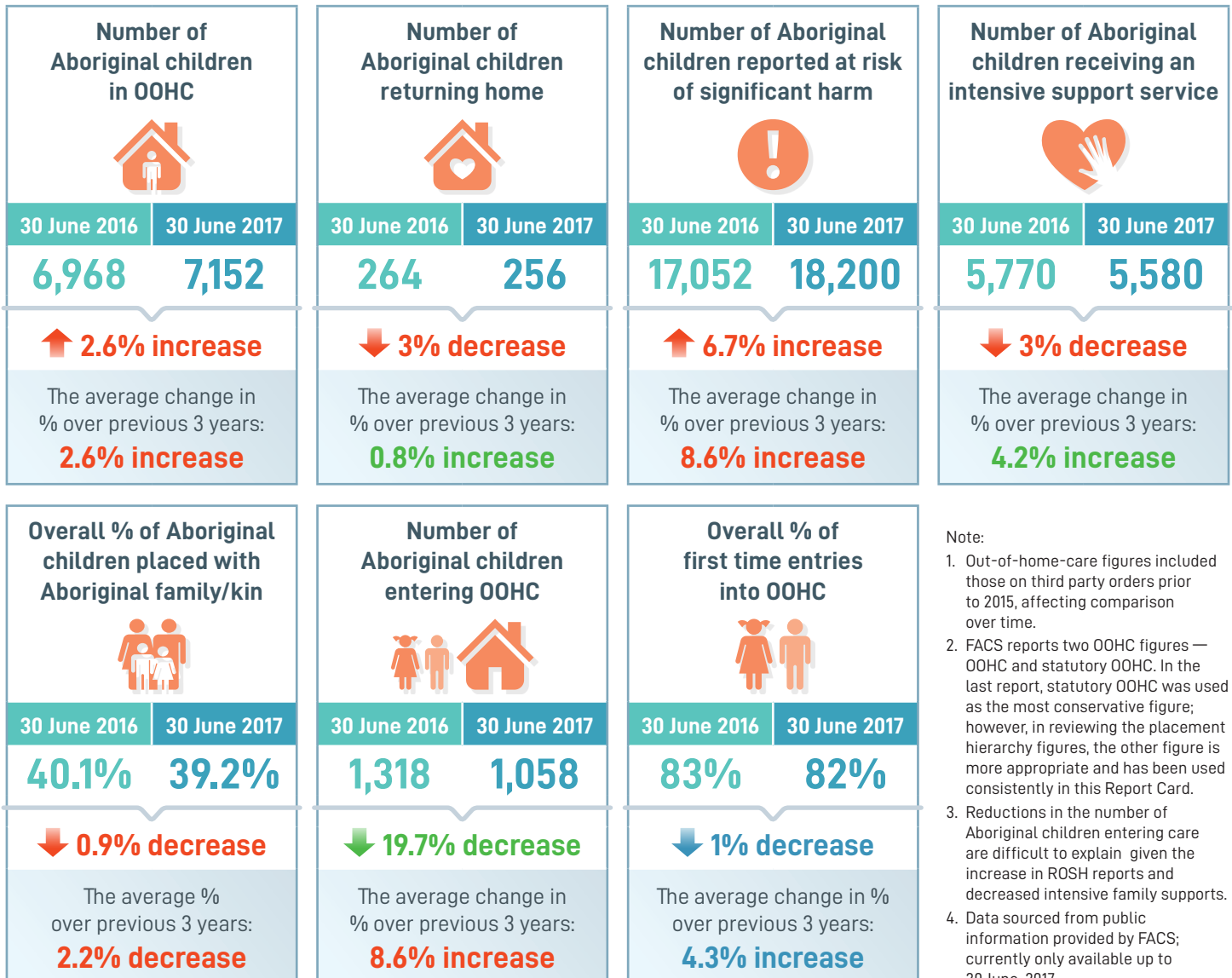


on the performance of the NSW Government — Family and Community Services

AS AT 30 JUNE 2017



Areas for improvement

- ▶ Adherence to the Aboriginal Child Placement Principle, prioritising prevention and restoration, and ensuring all children are placed with family and kin wherever possible and are supported to grow strong in culture and identity
- ▶ AbSec has proposed the establishment of an Aboriginal child and family commission to provide leadership and support for the system's work with Aboriginal children and families. Responsibilities would include directing investment (proportionate to need) to community-designed and community-delivered support services; collecting and monitoring data; and improving transparency and accountability.
- ▶ Government and FACS must provide the investment and resources needed to establish a state-wide Aboriginal child and family support sector. This includes resourcing the Industry Development Strategy, equipping Aboriginal community-controlled services to support local families.
- ▶ Refocus the child and family system to support responsive Aboriginal-led design and delivery with the full implementation of Aboriginal-led policy, including the recently endorsed Aboriginal Case Management Policy.